

A stylized tree with a grey trunk and branches. The leaves are represented by various colored shapes: light green, yellow, purple, orange, and pink. The tree is positioned on the right side of the slide, with its trunk extending down to a green wavy line at the bottom.

Boulder County COVID-19 Update

July 29, 2022

Key Messages

- **Current Boulder County Community Level: MEDIUM, but Wastewater data suggests that true case numbers are underreported.**
 - **Interpretation:** COVID-19 case numbers and hospitalization admissions are coming down, reducing the risk of overwhelming our healthcare systems in Boulder County.
 - Of note: Nationally, cases continue to increase; State rates are generally beginning to improve; return to school may increase cases in coming weeks
- **Omicron subvariants**
 - NOWCAST 7/23/2022: BA.5: ~81.9% (US); BA.2.12.1: 5% (US); BA.4: 12% (US);
 - BA.4/BA.5: more transmissible, higher immune escape
 - Hospitalizations reflect no increase in disease severity of BA.5 compared to BA.2.12.1 and decreased severity compared to the delta variant.
- **Wastewater surveillance** ([CDPHE](#): updated 7/25, last data point 7/21).
 - With diminished testing, home testing, and asymptomatic infection, wastewater surveillance provides an additional indicator of community infection.
 - Wastewater in Boulder and Longmont have increased since April with variable trends; with Boulder City seeing spikes comparable to the January '22 omicron peak since May '22.
 - In recent weeks, Boulder and Longmont wastewater trends have declined, and more recently Louisville and Nederland are beginning to decline.
- The Federal Public Health COVID Emergency Declaration was renewed for 90 days on July 15, 2022.
- [CDPHE's PHO 20-38](#) (19th amended 7/15/2022, expires 8/14/2022) requires:
 - Patients, residents, visitors, and staff, regardless of vaccination status, to mask in the following settings during **Medium** or **High** community levels, during outbreaks or when otherwise required by local or state public health officials:
 - Shelters, prisons, jails, community corrections, substance and drug treatment, adult day centers and Day programs and facilities
 - Patients, residents, visitors, and staff, regardless of vaccination status to mask in the following settings during substantial or **High** transmission levels, outbreaks or when otherwise required by local or state public health officials (staff who are not up to date are required to mask at all times and encouraged to do daily testing when working or weekly PCR)
 - Healthcare settings
 - All CO hospitals required to report to EMResources twice weekly, Tues and Fri by 10 am
 - **Vaccination requirements for state contractors**

***CDC Tracker: COVID-19 Community Levels (7/28/22):
MEDIUM***

CDC Community Level: Medium

New COVID-19 cases per 100,000 people past 7 days	COVID-19 Community Levels= MEDIUM 7/28/22 (Use the highest level that applies to your community)			
	Indicators	LOW	MEDIUM	HIGH
Fewer than 200 199.3	New COVID-19 hospital admissions per 100,000 (7-day total)	<10.0	10.0-19.9 16.1	>=20.0
	Percent of staffed inpatient beds occupied by COVID-19 patients (7-day average)	<10% 3.5%	10.0-14.9%	>=15%
200 or more	New COVID-19 hospital admissions per 100,000 (7-day total)	NA	<10.0	>=10
	Percent of staffed inpatient beds occupied by COVID-19 patients (7-day average)	NA	<10%	>=10.0%

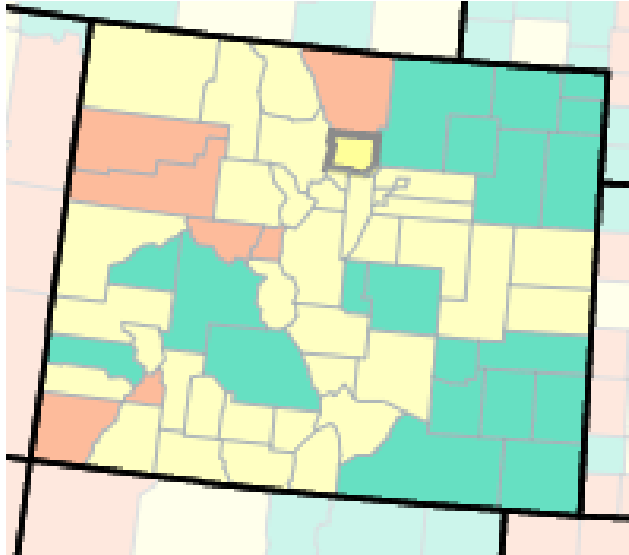


CDC Community Levels for Boulder County

Date	Cases	Admits	Beds
4/14	82.16	2.5	1%
4/21	130.29	4.5	1%
4/28	138.87	6.3	0.9%
5/5	194.97	3.5	1%
5/12	257.21	8.3	1.3%
5/19	349.48	8.1	1.8%
5/26	318.52	10.6	1.9%
6/2	331.4	10.6	2.1%
6/9	379.2	16.4	2.8%
6/16	326.8	12.4	2.6%
6/23	251.69	14.4	3.1%
6/30	322.81	15.6	3.2%
7/7	248.62	18.4	3.2%
7/14	244.33	17.9	3.5%
7/21	233.3	18.2	3%
7/28	199.3	16.1	3.5%



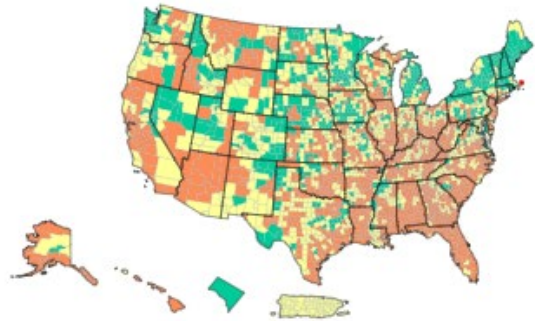
CDC COVID-19 Community Level Map by county: CO 7/28/22



Time Period: COVID-19 Community Levels were calculated on Thu Jul 28 2022. New COVID-19 cases per 100,000 population (7-day total) are calculated using data from Thu Jul 21 2022 - Wed Jul 27 2022. New COVID-19 admissions per 100,000 population (7-day total) and Percent of inpatient beds occupied by COVID-19 patients (7-day average) are calculated using data from Wed Jul 20 2022 - Tue Jul 26 2022.

Trend worsening in SE and beginning to see some improvement in the SW and parts of the NW

Week of 7/28

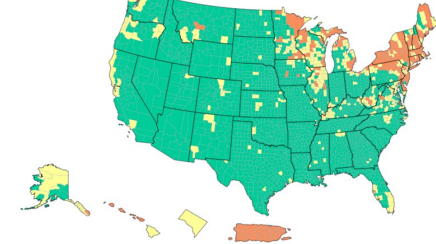


COVID-19 Community Levels in US by County

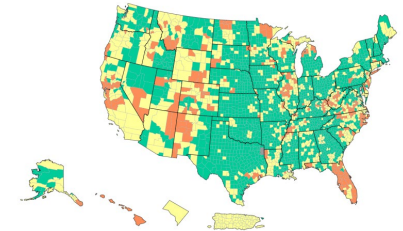
	Total	Percent	% Change
High	1477	45.83%	3.85%
Medium	1143	35.46%	- 2.14%
Low	603	18.71%	- 1.71%

How are COVID-19 Community Levels calculated?

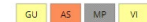
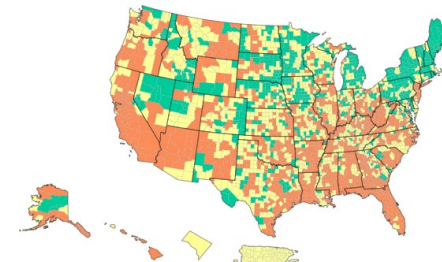
Week of 5/19



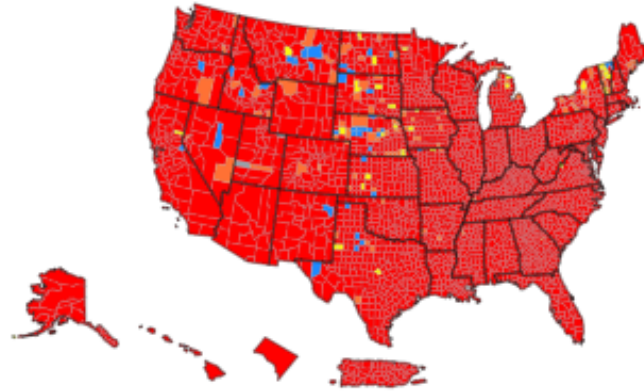
Week of 6/16



Week of 7/21



94% of Counties in the US are Experiencing High Transmission



Community Transmission in US by County

	Total	Percent	% Change
High	3051	94.69%	1.58%
Substantial	95	2.95%	- 1.09%
Moderate	34	1.06%	- 0.06%
Low	40	1.24%	- 0.47%

Determining Transmission Risk

If the two indicators suggest different transmission levels, the higher level is selected

	Low	Moderate	Substantial	High
New cases per 100,000 persons in the past 7 days*	<10	10-49.99	50-99.99	≥100
Percentage of positive NAATs tests during the past 7 days**	<5%	5-7.99%	8-9.99%	≥10.0%

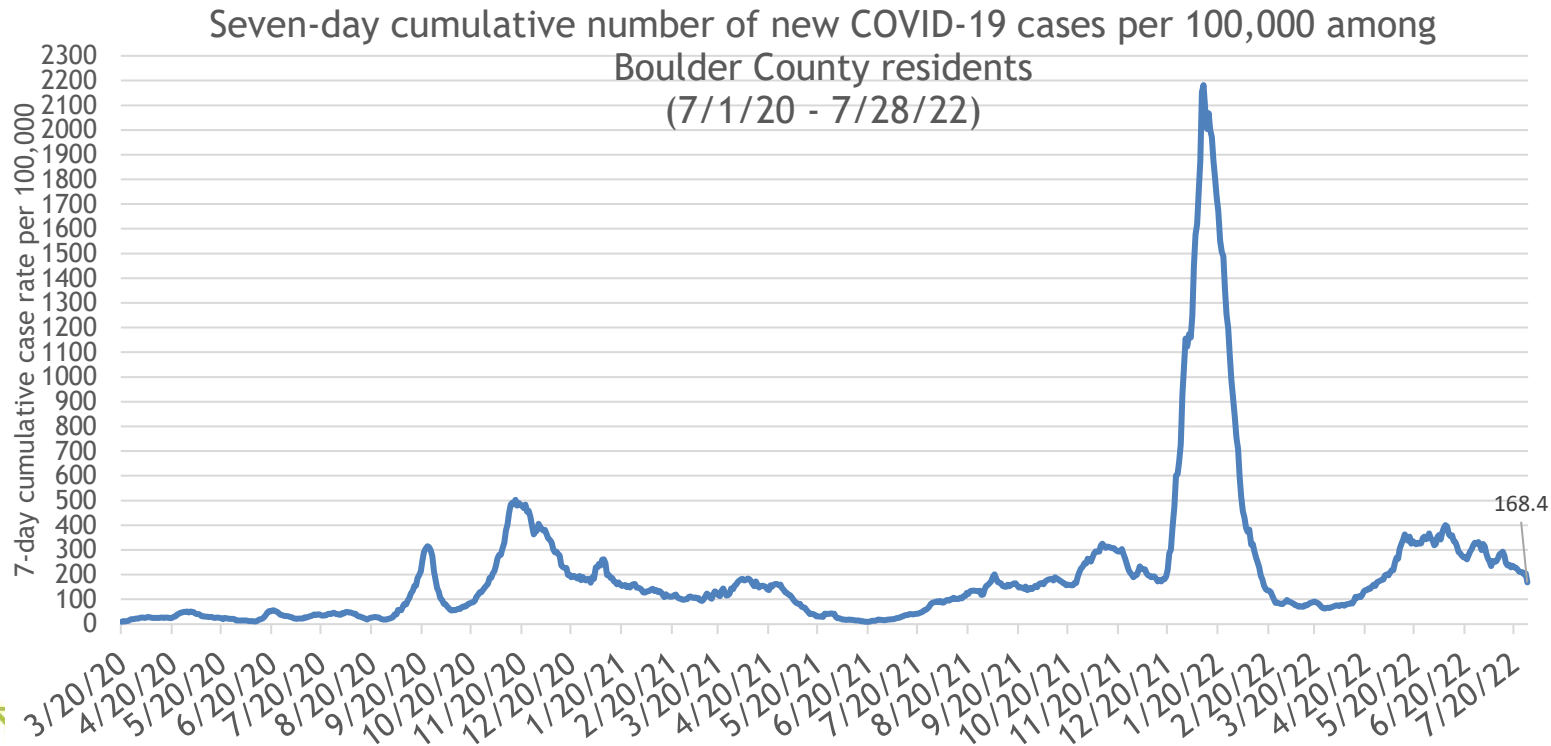


Recommended actions based on current community level: **MEDIUM**

- *Stay up to date with vaccinations and boosters*
- *Test, isolate/quarantine if symptoms or exposure or have plans to be around someone at risk for severe disease*
- *Ventilation*
- *Hand-washing*
- *Consider wearing a well-fitting medical grade mask for best protection and to avoid illness and disruption of activities*
- *For those at risk for severe disease*
 - Talk to health care provider regarding therapeutics and additional precautions

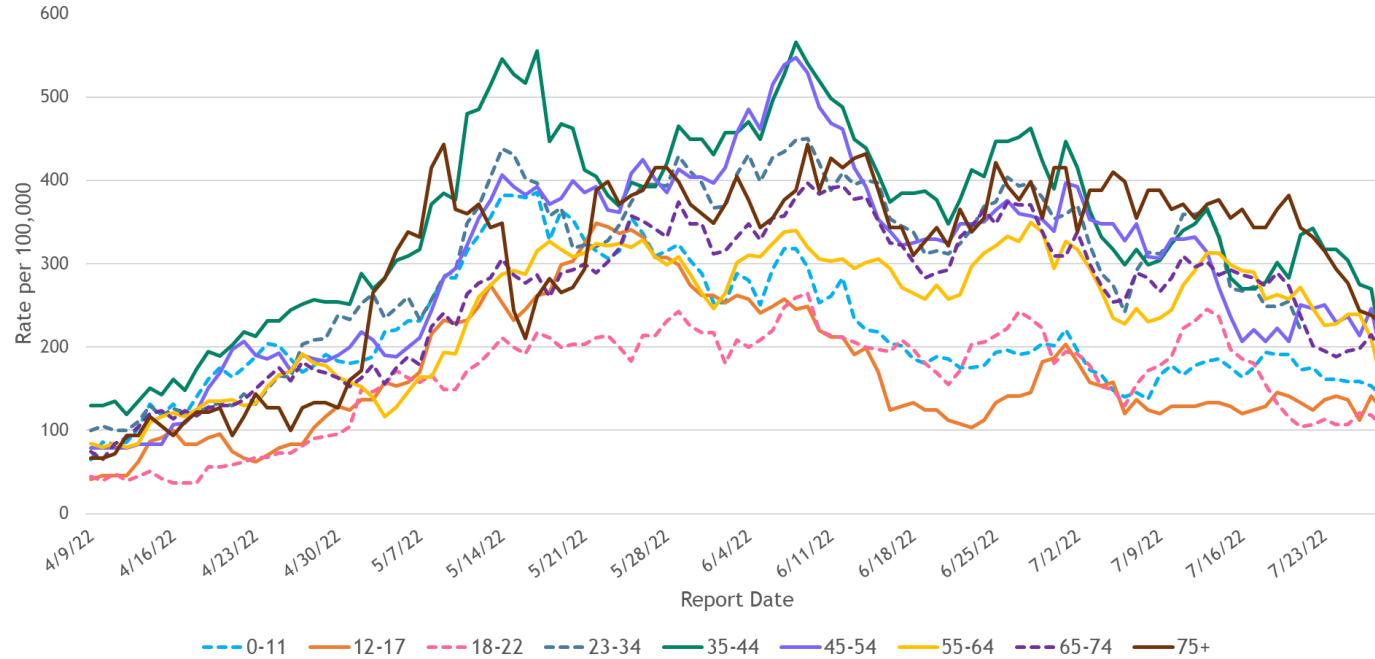
COVID-19 cases among Boulder County residents

7-day cumulative new COVID-19 per 100,000 Boulder County Residents



Case trends among age groups

Trend in seven-day incidence of new COVID-19 cases among Boulder County residents, by age group
(7/29/22)



COVID-19 testing among Boulder County residents

Seven-day positivity

7-day PCR positivity among Boulder County residents

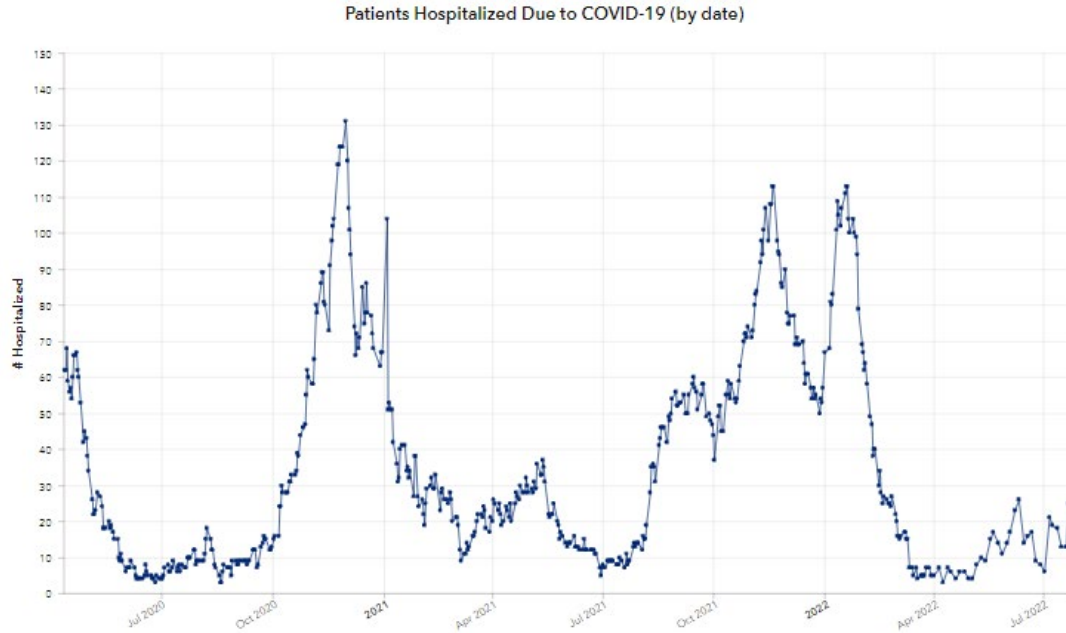


7/26/22: 10.6%, 871 tests per day on average



Hospitalizations and impacts on health care systems in Boulder County

Hospitalizations in Boulder County



- 17 people hospitalized with confirmed COVID-19 7/28
- 14 staffed ICU beds available
- 22 pediatric cases at TCH (40.9% ages 0-4) 7/28



COVID-19 Deaths among Boulder County residents

***COVID-19 vaccination among Boulder
County residents (7/28/2022)***

Indicator	Number of people Boulder County	Percent of total population Boulder County	Percent of eligible Colorado	Percent of total population US
Received a partial course of a COVID-19 vaccine	22,649	6.9%		
Fully vaccinated with a COVID-19 vaccine	257,201	78.6%	75%	67.2%
Received at least one COVID-19 vaccine dose	279,850	85.5%	83.2%	78.7%
Booster/third dose	227,677	70%	56.1%	49.8%



Key COVID data resources

Boulder County Public Health Vaccine Dashboard: <https://www.boco.org/covidvaccinedata>
<https://www.boco.org/covid-vacunas-datos>

Boulder County Public Health COVID Illness Data Page:

<https://www.boco.org/covid19illnessrecovery>
<https://www.boco.org/covid-datos>

Boulder County Public Health hospital resource dashboard: <https://arcg.is/0HqqbS0>

CU Boulder COVID Ready Dashboard: <https://www.colorado.edu/covid-19-ready-dashboard>

Colorado Department of Public Health and Environment COVID Data:

<https://covid19.colorado.gov/covid-19-data>

Click “Outbreaks” to view a list or map of current and historic Boulder County outbreaks

[Colorado Department of Public Health and Environment Wastewater Surveillance](#)